



## GENERAL INFORMATION

The boiler of copper water heater is made from 99.85% pure copper, conforming to BS 2870/ C106. Copper interiors assures you hygienic water at all times. As copper is self protecting, you are also assured of extra long life of the water heater.

**Note:**

- Thermal safety cut-out, manually resettable.
- Special element with Zinc Anode protection for aggressive water.
- Rated voltage - 220-240V, 50-60 Hz.
- Elements available in 1.6-1.8, 2.1-2.4, 2.9-3.1 kW rating.

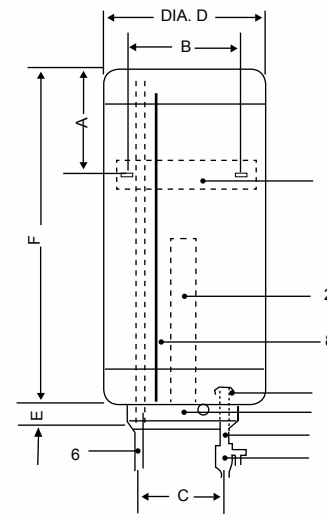


**“HOTEX” PREMIUM COPPER  
THE FIT AND FORGET WATER HEATER**

## VERTICAL WALL MOUNTING "P" SERIES

MODEL NO.	P010BB	P030BB	P050BB	P080BB	P100BB	P120BB	P0150BB
CAPACITY IN LTS.	10	30	50	80	100	120	150
Dimensions (mm)	A	120	165	165	170	170	170
	B	210	265	265	265	265	280
	C	80	100	100	100	100	100
	D	250	400	400	450	450	450
	E	45	45	45	45	45	45
	F	450	420	570	690	840	990
APPROX.WT.IN kg	6.0	12.0	16.5	21.5	24.5	29.0	34.5
RATED INPUT-KW	1.6-1.8		1.6-1.8 / 2.1-2.4		2.9-3.1		
RATED PRESSURE	0.6 MPa						
POWER SUPPLY	Single Phase						
HEAT INSULATION	Polyurethane Foam						
I/O SIZE-B.S.P.T.	1/2"					3/4"	
I/O POSITION	Bottom**						

- |                     |                          |
|---------------------|--------------------------|
| 1. MOUNTING BRACKET | 5. SAFETY VALVE          |
| 2. HEATING ELEMENT  | 6. OUTLET PIPE           |
| 3. ELEMENT COVER    | 7. ANTI-SPLASH MECHANISM |
| 4. INLET PIPE       | 8. ZINC ANODE            |

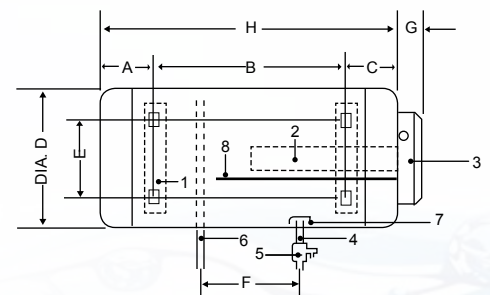


## HORIZONTAL WALL MOUNTING "Q" SERIES

MODEL NO.	Q010BB	Q030SS	Q050BB	Q080BB	Q100BB	Q0120BB	Q0150BB
CAPACITY IN LTS.	10	30	50	80	100	120	150
Dimensions (mm)	A	120	130	160	165	170	170
	B	210	160	250	360	500	650
	C	120	130	160	165	170	170
	D	250	400	400	450	450	450
	E	210	265	265	265	265	265
	F	220	**	160	160	160	160
	G	45	45	45	45	45	45
	H	450	420	570	690	840	990
APPROX.WT.IN kg	6.0	12.0	16.5	21.5	24.5	29.0	34.5
RATED INPUT-KW	1.6-1.8		1.6-1.8 / 2.1-2.4		2.9-3.1		
RATED PRESSURE	0.6 MPa						
POWER SUPPLY	Single Phase						
HEAT INSULATION	Polyurethane Foam						
I/O SIZE-B.S.P.T.	1/2"					3/4"	
I/O POSITION	Bottom**						

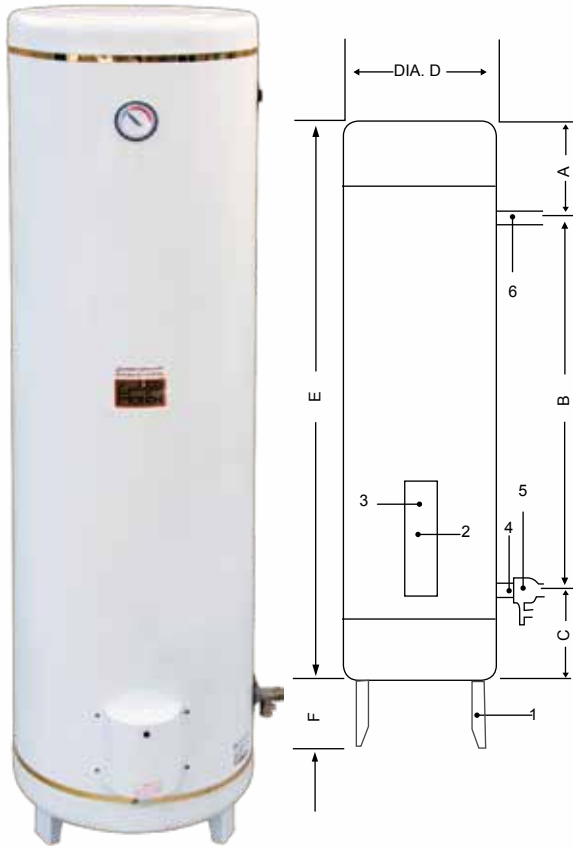
Note: \*\*In 30 Lts. intel/outlet at side only - distance between pipes is 310 mm

- |                      |                          |
|----------------------|--------------------------|
| 1. MOUNTING BRACKETS | 5. SAFETY VALVE          |
| 2. HEATING ELEMENT   | 6. OUTLET PIPE           |
| 3. ELEMENT COVER     | 7. ANTI-SPLASH MECHANISM |
| 4. INLET PIPE        | 8. ZINC ANODE            |



**"HOTEX" PREMIUM COPPER  
THE FIT AND FORGET WATER HEATER**

## VERTICAL FLOOR MOUNTING "R" SERIES



MODEL NOS.	R100SS	R120SS	R150SS	R180SS	R200SS
CAPACITY IN LTS.	100	120	150	180	200
DIMENSIONS (MM)	A	155	160	160	160
	B	530	670	860	1100
	C	155	160	160	160
	D	450	450	450	450
	E	840	990	1180	1420
	F	80	80	80	80
APPROX. WT. IN kg	24.5	29.0	34.5	41.0	43.5
RATED INPUT-kW	1.6-1.8	2.9-3.1	2.9-3.1		
RATED PRESSURE	0.6 MPa				
POWER SUPPLY	Single Phase				
HEAT INSULATION	Polyurethane Form				
I/O SIZE-B.S.P.T	1/2"		3/4"		
I/O POSITION	Side				

1. LEGS
2. HEATING ELEMENT WITH ZINC ANODE
3. ELEMENT COVER
4. INLET PIPE
5. SAFETY VALVE
6. OUTLET PIPE

## HORIZONTAL FLOOR MOUNTING "S" SERIES



MODEL NOS.	S100TT	S120TT	S150TT	S180TT	S200TT
CAPACITY IN LTS.	100	120	150	180	200
DIMENSIONS (MM)	A	170	170	170	170
	B	500	650	840	1080
	C	170	170	170	170
	D	450	450	450	450
	E	15	15	15	15
	F	160	160	160	160
	G	45	45	45	45
	H	840	990	1180	1420
APPROX. WT. IN kg	24.5	29.0	34.5	41.0	43.5
RATED INPUT-kW	1.6-1.8	2.9-3.1	2.9-3.1		
RATED PRESSURE	0.6 MPa				
POWER SUPPLY	Single Phase				
HEAT INSULATION	Polyurethane Form				
I/O SIZE-B.S.P.T	1/2"		3/4"		
I/O POSITION	Top				

1. MOUNTING BRACKETS
2. HEATING ELEMENT WITH ZINC ANODE
3. ELEMENT COVER
4. INLET PIPE
5. SAFETY VALVE
6. OUTLET PIPE
7. DRAIN VALVE



**"HOTEX" PREMIUM COPPER  
THE FIT AND FORGET WATER HEATER**